

1 AUTO INDEX	2 MOTO FREE PASS	3 AUTO DRAGSTER	4 MOTO DRAGSTER
A AT 1(2700)	A AT 2(2800)	A BT 1(2300)	A BT 2(2400)
A INDEX 07	A INDEX 08	A INDEX 09	A INDEX 10
A INDEX 11	A INDEX 12	A INDEX 13	A OPEN(2900)
JUNIOR(1900)	M PRO STREET 1(13)	M PRO STREET 2(11)	M PRO Z(1700)
M REAL STREET(160)	M STREET 2(1400)	M SUPER PRO(1000)	M SUPER STREET(1
	M TRUE STREET 9(2)		

Print

A INDEX 13 -- Qualify Round

Driver	ET	Closest	Speed	RT
1 1301, PAPADOPOULOS J	13.147	0.147	172.24	3.302

LEGEND: B = breakout
 R = redlight
 click heading to sort standings

1 AUTO INDEX	2 MOTO FREE PASS	3 AUTO DRAGSTER	4 MOTO DRAGSTER
A AT 1(2700)	A AT 2(2800)	A BT 1(2300)	A BT 2(2400)
A INDEX 07	A INDEX 08	A INDEX 09	A INDEX 10
A INDEX 11	A INDEX 12	A INDEX 13	A OPEN(2900)
JUNIOR(1900)	M PRO STREET 1(13)	M PRO STREET 2(11)	M PRO Z(1700)
M REAL STREET(160)	M STREET 2(1400)	M SUPER PRO(1000)	M SUPER STREET(1)
M TRUE STREET 9(2)			

Print

A INDEX 12 -- Qualify Round

Driver	ET	Closest	Speed	RT
1 1201, LABROUSIS S	11.681	0.058	186.62	1.015

LEGEND: B = breakout
 R = redlight
 click heading to sort standings

1 AUTO INDEX	2 MOTO FREE PASS	3 AUTO DRAGSTER	4 MOTO DRAGSTER
A AT 1(2700)	A AT 2(2800)	A BT 1(2300)	A BT 2(2400)
A INDEX 07	A INDEX 08	A INDEX 09	A INDEX 10
A INDEX 11	A INDEX 12	A INDEX 13	A OPEN(2900)
JUNIOR(1900)	M PRO STREET 1(1300)	M PRO STREET 2(1100)	M PRO Z(1700)
M REAL STREET(1600)	M STREET 2(1400)	M SUPER PRO(1000)	M SUPER STREET(1000)
	M TRUE STREET 9(2000)		

A INDEX 11 -- Qualify Round

Driver	ET	Closest	Speed	RT
1 1108, NAVRAZOGLOU J	11.105	0.105	204.77	1.384
2 1109, NAVRAZOGLOU K	11.188	0.188	163.78	1.168
3 1107, ARMENI E	11.419	0.419	201.68	2.014
4 1106, KARDATOS I	11.628	0.628	208.45	0.912
5 1102, KATSANOS X	11.701	0.701	188.77	0.920
6 1103, LIAPIS G	11.839	0.839	206.42	3.829
7 1105, KAKALIS P	12.457	1.457	184.52	0.964
8 1104, LEMOUAN N	12.600	1.600	208.45	1.257
9 1110, TRIANTAFILOPOULOS CH	12.607	1.607	198.56	1.159

LEGEND: B = breakout
R = redlight
click heading to sort standings

1 AUTO INDEX	2 MOTO FREE PASS	3 AUTO DRAGSTER	4 MOTO DRAGSTER
A AT 1(2700)	A AT 2(2800)	A BT 1(2300)	A BT 2(2400)
A INDEX 07	A INDEX 08	A INDEX 09	A INDEX 10
A INDEX 11	A INDEX 12	A INDEX 13	A OPEN(2900)
JUNIOR(1900)	M PRO STREET 1(13)	M PRO STREET 2(11)	M PRO Z(1700)
M REAL STREET(160)	M STREET 2(1400)	M SUPER PRO(1000)	M SUPER STREET(1
	M TRUE STREET 9(2)		

Print

A INDEX 10 -- Qualify Round

Driver	ET	Closest	Speed	RT
1 1001, SIMINIS K	10.751	0.751	230.62	2.014

LEGEND: B = breakout
 R = redlight
 click heading to sort standings

1 AUTO INDEX	2 MOTO FREE PASS	3 AUTO DRAGSTER	4 MOTO DRAGSTER
A AT 1(2700)	A AT 2(2800)	A BT 1(2300)	A BT 2(2400)
A INDEX 07	A INDEX 08	A INDEX 09	A INDEX 10
A INDEX 11	A INDEX 12	A INDEX 13	A OPEN(2900)
JUNIOR(1900)	M PRO STREET 1(13)	M PRO STREET 2(11)	M PRO Z(1700)
M REAL STREET(160)	M STREET 2(1400)	M SUPER PRO(1000)	M SUPER STREET(1
M TRUE STREET 9(2)			

Print

A INDEX 09 -- Qualify Round

Driver	ET	Closest	Speed	RT
1 0902, SKAMNELOS S	11.480	2.480	170.53	1.087
2 0901, ZAXOS D	14.436	5.436	95.89	2.298

LEGEND: B = breakout
 R = redlight
 click heading to sort standings

1 AUTO INDEX	2 MOTO FREE PASS	3 AUTO DRAGSTER	4 MOTO DRAGSTER
A AT 1(2700)	A AT 2(2800)	A BT 1(2300)	A BT 2(2400)
A INDEX 07	A INDEX 08	A INDEX 09	A INDEX 10
A INDEX 11	A INDEX 12	A INDEX 13	A OPEN(2900)
JUNIOR(1900)	M PRO STREET 1(13)	M PRO STREET 2(11)	M PRO Z(1700)
M REAL STREET(160)	M STREET 2(1400)	M SUPER PRO(1000)	M SUPER STREET(1
M TRUE STREET 9(2)			

Print

A INDEX 08 -- Qualify Round

Driver	ET	Closest	Speed	RT
1 0803, AFENTOYLIDIS N	9.873	1.873	204.31	1.918
2 0801, XONDROPOULOS F	10.052	2.052	251.22	5.011
3 0802, BAXTSEVANIDOU M	10.552	2.552	170.77	2.282

LEGEND: B = breakout
 R = redlight
 click heading to sort standings

1 AUTO INDEX	2 MOTO FREE PASS	3 AUTO DRAGSTER	4 MOTO DRAGSTER
A AT 1(2700)	A AT 2(2800)	A BT 1(2300)	A BT 2(2400)
A INDEX 07	A INDEX 08	A INDEX 09	A INDEX 10
A INDEX 11	A INDEX 12	A INDEX 13	A OPEN(2900)
JUNIOR(1900)	M PRO STREET 1(13)	M PRO STREET 2(11)	M PRO Z(1700)
M REAL STREET(160)	M STREET 2(1400)	M SUPER PRO(1000)	M SUPER STREET(1
	M TRUE STREET 9(2)		

Print

A INDEX 07 -- Qualify Round

Driver	ET	Closest	Speed	RT
1 0701, GITSIS G	8.483	1.483	253.52	0.515

LEGEND: B = breakout
 R = redlight
 click heading to sort standings

1 AUTO INDEX	2 MOTO FREE PASS	3 AUTO DRAGSTER	4 MOTO DRAGSTER
A AT 1(2700)	A AT 2(2800)	A BT 1(2300)	A BT 2(2400)
A INDEX 07	A INDEX 08	A INDEX 09	A INDEX 10
A INDEX 11	A INDEX 12	A INDEX 13	A OPEN(2900)
JUNIOR(1900)	M PRO STREET 1(13)	M PRO STREET 2(11)	M PRO Z(1700)
M REAL STREET(160)	M STREET 2(1400)	M SUPER PRO(1000)	M SUPER STREET(1
M TRUE STREET 9(2)			

Print

A BT 1(2300) -- Qualify Round

Driver	ET	Closest	Speed	RT
1 2305, SIMINIS K	10.735	B0.000	232.25	2.021
2 2302, KARDATOS I	11.527	B0.000	206.42	0.837
3 2301, KATSANOS X	11.600	B0.000	189.67	0.945
4 2303, ARMENI E	12.008	B0.000	212.89	0.932
5 2304, NAVRAZOGLOU K	12.649	B0.000	115.34	1.172

LEGEND: B = breakout
 R = redlight
 click heading to sort standings

1 AUTO INDEX	2 MOTO FREE PASS	3 AUTO DRAGSTER	4 MOTO DRAGSTER
A AT 1(2700)	A AT 2(2800)	A BT 1(2300)	A BT 2(2400)
A INDEX 07	A INDEX 08	A INDEX 09	A INDEX 10
A INDEX 11	A INDEX 12	A INDEX 13	A OPEN(2900)
JUNIOR(1900)	M PRO STREET 1(13)	M PRO STREET 2(11)	M PRO Z(1700)
M REAL STREET(160)	M STREET 2(1400)	M SUPER PRO(1000)	M SUPER STREET(1
M TRUE STREET 9(2)			

Print

A BT 2(2400) -- Qualify Round

Driver	ET	Closest	Speed	RT
1 2401, LIAPIS G	11.046	B0.000	211.14	1.613

LEGEND: B = breakout
 R = redlight
 click heading to sort standings

1 AUTO INDEX	2 MOTO FREE PASS	3 AUTO DRAGSTER	4 MOTO DRAGSTER
A AT 1(2700)	A AT 2(2800)	A BT 1(2300)	A BT 2(2400)
A INDEX 07	A INDEX 08	A INDEX 09	A INDEX 10
A INDEX 11	A INDEX 12	A INDEX 13	A OPEN(2900)
JUNIOR(1900)	M PRO STREET 1(13)	M PRO STREET 2(11)	M PRO Z(1700)
M REAL STREET(160)	M STREET 2(1400)	M SUPER PRO(1000)	M SUPER STREET(1
M TRUE STREET 9(2)			

Print

A AT 1(2700) -- Qualify Round

Driver	ET	Closest	Speed	RT
1 2701, XONDROPOULOS F	9.194	B0.000	256.59	3.648
2 2702, ZAXOS D	10.080	B0.000	245.23	1.932
3 2703, SKAMNELOS S	10.174	B0.000	221.94	1.192

LEGEND: B = breakout
 R = redlight
 click heading to sort standings

1 AUTO INDEX	2 MOTO FREE PASS	3 AUTO DRAGSTER	4 MOTO DRAGSTER
A AT 1(2700)	A AT 2(2800)	A BT 1(2300)	A BT 2(2400)
A INDEX 07	A INDEX 08	A INDEX 09	A INDEX 10
A INDEX 11	A INDEX 12	A INDEX 13	A OPEN(2900)
JUNIOR(1900)	M PRO STREET 1(13)	M PRO STREET 2(11)	M PRO Z(1700)
M REAL STREET(160)	M STREET 2(1400)	M SUPER PRO(1000)	M SUPER STREET(1
M TRUE STREET 9(2)			

Print

A AT 2(2800) -- Qualify Round

Driver	ET	Closest	Speed	RT
1 2803, AFENTOYLIDIS N	10.096	B0.000	183.11	2.263
2 2801, KATSIGIANNIS G	10.152	B0.000	233.16	1.373

LEGEND: B = breakout
 R = redlight
 click heading to sort standings

1 AUTO INDEX	2 MOTO FREE PASS	3 AUTO DRAGSTER	4 MOTO DRAGSTER
A AT 1(2700)	A AT 2(2800)	A BT 1(2300)	A BT 2(2400)
A INDEX 07	A INDEX 08	A INDEX 09	A INDEX 10
A INDEX 11	A INDEX 12	A INDEX 13	A OPEN(2900)
JUNIOR(1900)	M PRO STREET 1(13)	M PRO STREET 2(11)	M PRO Z(1700)
M REAL STREET(160)	M STREET 2(1400)	M SUPER PRO(1000)	M SUPER STREET(1
	M TRUE STREET 9(2)		

Print

A OPEN(2900) -- Qualify Round

Driver	ET	Closest	Speed	RT
1 2902, TAXOPOULOS P	9.104	B0.000	256.22	1.532

LEGEND: B = breakout
 R = redlight
 click heading to sort standings

1 AUTO INDEX	2 MOTO FREE PASS	3 AUTO DRAGSTER	4 MOTO DRAGSTER
A AT 1(2700)	A AT 2(2800)	A BT 1(2300)	A BT 2(2400)
A INDEX 07	A INDEX 08	A INDEX 09	A INDEX 10
A INDEX 11	A INDEX 12	A INDEX 13	A OPEN(2900)
JUNIOR(1900)	M PRO STREET 1(1300)	M PRO STREET 2(1100)	M PRO Z(1700)
M REAL STREET(1600)	M STREET 2(1400)	M SUPER PRO(1000)	M SUPER STREET(1100)
M TRUE STREET 9(2000)			

M PRO Z(1700) -- Qualify Round

Driver	ET	Closest	Speed	RT
1 1701, LABROPOULOS J	9.625	B0.000	212.51	0.525
2 1799, XALKIDIS T	10.287	B0.000	197.47	1.020
3 1702, STERGIOU A	10.560	B0.000	182.37	0.743
4 1714, KARANTONIOU A	10.663	B0.000	191.69	8.395
5 1777, ARONIADAS T	10.846	B0.000	191.59	0.759
6 1789, VOUTSINOS F	11.722	B0.000	174.58	0.867
7 1771, TZIMAS J	12.139	B0.000	166.20	2.038
8 1741, DRAGATIS P	12.373	B0.000	165.13	0.986
9 1719, GALANOPOULOS D	12.643	B0.000	155.17	1.228
10 1791, PALIOURAS J	13.182	B0.000	153.25	1.163

LEGEND: B = breakout
R = redlight
click heading to sort standings

1 AUTO INDEX	2 MOTO FREE PASS	3 AUTO DRAGSTER	4 MOTO DRAGSTER
A AT 1(2700)	A AT 2(2800)	A BT 1(2300)	A BT 2(2400)
A INDEX 07	A INDEX 08	A INDEX 09	A INDEX 10
A INDEX 11	A INDEX 12	A INDEX 13	A OPEN(2900)
JUNIOR(1900)	M PRO STREET 1(1300)	M PRO STREET 2(1100)	M PRO Z(1700)
M REAL STREET(1600)	M STREET 2(1400)	M SUPER PRO(1000)	M SUPER STREET(1000)
M TRUE STREET 9(2000)			

M TRUE STREET 9(2000) -- Qualify Round

Driver	ET	Closest	Speed	RT
1 2070, SOULTOUKIS A	9.006	0.006	265.09	0.717
2 2001, MANTHOU D	9.012	0.012	254.59	0.563
3 2095, LAIOS X	9.066	0.066	255.86	0.719
4 2056, KONTAXIS G	9.084	0.084	254.23	0.510
5 2072, KAZDAGLIS S	9.123	0.123	260.68	0.487
6 2013, PANTOPOULOU E	9.181	0.181	249.13	2.242
7 2023, LEONTIOU E	9.192	0.192	262.58	0.714
8 2019, TZEIVARIDIS I	9.218	0.218	252.63	0.670
9 2064, KIRIAZIS A	9.279	0.279	246.40	0.669
10 2099, KOTROZOS G	9.292	0.292	245.06	0.574
11 2022, MANDRAGOUREAS D	9.296	0.296	239.20	0.494
12 2012, PAPADIMITRIOU J	9.398	0.398	249.13	0.541
13 2088, PAPAGIANNIS M	10.019	1.019	217.12	0.983
14 2045, KAPOGLIS E	10.924	1.924	199.55	0.525
15 2033, XAGORARI I	10.967	1.967	228.13	1.288

LEGEND: B = breakout
R = redlight
click heading to sort standings

1 AUTO INDEX	2 MOTO FREE PASS	3 AUTO DRAGSTER	4 MOTO DRAGSTER
A AT 1(2700)	A AT 2(2800)	A BT 1(2300)	A BT 2(2400)
A INDEX 07	A INDEX 08	A INDEX 09	A INDEX 10
A INDEX 11	A INDEX 12	A INDEX 13	A OPEN(2900)
JUNIOR(1900)	M PRO STREET 1(1300)	M PRO STREET 2(1100)	M PRO Z(1700)
M REAL STREET(1600)	M STREET 2(1400)	M SUPER PRO(1000)	M SUPER STREET(1000)
	M TRUE STREET 9(2000)		

M STREET 2(1400) -- Qualify Round

Driver	ET	Closest	Speed	RT
1 1497, XALKIDIS T	8.461	B0.000	271.69	0.799
2 1411, KOUZOULOGLOU L	8.465	B0.000	272.10	0.568
3 1402, PAPAS X	8.608	B0.000	272.52	1.012
4 1477, KALOS A	8.620	B0.000	266.27	0.568
5 1401, PASXALIS J	8.817	B0.000	260.49	0.590
6 1498, PASXOS D	8.919	B0.000	265.87	0.899
7 1440, LABROFOTIS K	8.989	B0.000	260.86	0.530

LEGEND: B = breakout
R = redlight
click heading to sort standings

1 AUTO INDEX	2 MOTO FREE PASS	3 AUTO DRAGSTER	4 MOTO DRAGSTER
A AT 1(2700)	A AT 2(2800)	A BT 1(2300)	A BT 2(2400)
A INDEX 07	A INDEX 08	A INDEX 09	A INDEX 10
A INDEX 11	A INDEX 12	A INDEX 13	A OPEN(2900)
JUNIOR(1900)	M PRO STREET 1(13)	M PRO STREET 2(11)	M PRO Z(1700)
M REAL STREET(1600)	M STREET 2(1400)	M SUPER PRO(1000)	M SUPER STREET(1
	M TRUE STREET 9(2)		

M REAL STREET(1600) -- Qualify Round

Driver	ET	Closest	Speed	RT
1 1602, BOULIOPOULOS E	7.812	B0.000	294.11	0.534
2 1679, PASXALIS J	7.889	B0.000	288.00	0.842
3 1614, GEORGAS P	7.998	B0.000	290.08	0.939
4 1686, VLASTARIS N	8.189	B0.000	282.35	0.714
5 1605, LAVASAS E	8.194	B0.000	259.74	0.488
6 1683, MILONAS A	8.279	B0.000	282.57	0.626
7 1640, KOLOKITHAS K	8.324	B0.000	277.34	0.677
8 1674, KOTOULAS X	8.349	B0.000	279.50	0.794
9 1644, DODEKATOS V	8.807	B0.000	260.86	0.733
10 1698, KARDARAS G	9.111	B0.000	245.90	0.794

LEGEND: B = breakout
R = redlight
click heading to sort standings

1 AUTO INDEX	2 MOTO FREE PASS	3 AUTO DRAGSTER	4 MOTO DRAGSTER
A AT 1(2700)	A AT 2(2800)	A BT 1(2300)	A BT 2(2400)
A INDEX 07	A INDEX 08	A INDEX 09	A INDEX 10
A INDEX 11	A INDEX 12	A INDEX 13	A OPEN(2900)
JUNIOR(1900)	M PRO STREET 1(1300)	M PRO STREET 2(1100)	M PRO Z(1700)
M REAL STREET(1600)	M STREET 2(1400)	M SUPER PRO(1000)	M SUPER STREET(1100)
	M TRUE STREET 9(2000)		

M PRO STREET 1(1300) -- Qualify Round

Driver	ET	Closest	Speed	RT
1 1342, PITSIKALIS P	8.568	B0.000	252.45	0.564
2 1301, ELAFRIS S	8.587	B0.000	245.90	0.802
3 1390, ATHANASOPOULOS P	8.898	B0.000	241.12	0.675
4 1383, MERKOURIS J	9.328	B0.000	233.00	1.207
5 1312, ANASTASIOU D	9.455	B0.000	220.04	0.765
6 1371, ASPIOTIS A	9.595	B0.000	225.84	2.156
7 1350, SIARAPIS N	9.638	B0.000	220.45	0.486
8 1356, TZOUVARAS Z	9.833	B0.000	225.56	0.900
9 1393, MANDRAGOUREAS D	9.933	B0.000	208.57	0.458
10 1392, TRIANTIS A	10.228	B0.000	205.36	1.230
11 1314, BASDEKIS T	10.238	B0.000	202.13	0.963
12 1399, ANAGNOSTELOS J	12.021	B0.000	174.67	1.028

LEGEND: B = breakout
R = redlight
click heading to sort standings

1 AUTO INDEX	2 MOTO FREE PASS	3 AUTO DRAGSTER	4 MOTO DRAGSTER
A AT 1(2700)	A AT 2(2800)	A BT 1(2300)	A BT 2(2400)
A INDEX 07	A INDEX 08	A INDEX 09	A INDEX 10
A INDEX 11	A INDEX 12	A INDEX 13	A OPEN(2900)
JUNIOR(1900)	M PRO STREET 1(1300)	M PRO STREET 2(1100)	M PRO Z(1700)
M REAL STREET(1600)	M STREET 2(1400)	M SUPER PRO(1000)	M SUPER STREET(1000)
	M TRUE STREET 9(2000)		

M PRO STREET 2(1100) -- Qualify Round

Driver	ET	Closest	Speed	RT
1 1101, KAPSIMALIS T	7.681	B0.000	285.03	0.536
2 1150, STAMATAKIS X	7.928	B0.000	287.08	1.139
3 1102, REVELTZI E	7.941	B0.000	273.14	0.544
4 1186, NATSIOS G	8.174	B0.000	265.29	0.620
5 1117, MIXALES S	8.554	B0.000	259.55	0.891
6 1112, LAMPROS D	8.671	B0.000	259.17	0.837
7 1180, MIXAILIDIS G	8.798	B0.000	269.46	0.740
8 1199, KARDARAS G	9.229	B0.000	232.10	0.993
9 1191, FOUNTOUKAS G	11.093	B0.000	242.75	1.108
10 1158, TILSISOGLOU S	12.359	B0.000	103.83	0.609

LEGEND: B = breakout
R = redlight
click heading to sort standings

1 AUTO INDEX	2 MOTO FREE PASS	3 AUTO DRAGSTER	4 MOTO DRAGSTER
A AT 1(2700)	A AT 2(2800)	A BT 1(2300)	A BT 2(2400)
A INDEX 07	A INDEX 08	A INDEX 09	A INDEX 10
A INDEX 11	A INDEX 12	A INDEX 13	A OPEN(2900)
JUNIOR(1900)	M PRO STREET 1(1300)	M PRO STREET 2(1100)	M PRO Z(1700)
M REAL STREET(1600)	M STREET 2(1400)	M SUPER PRO(1000)	M SUPER STREET(1200)
	M TRUE STREET 9(2000)		

M SUPER STREET(1200) -- Qualify Round

Driver	ET	Closest	Speed	RT
1 1286, TSAKIRIS S	7.274	B0.000	301.50	0.461
2 1235, BILAS T	7.319	B0.000	301.25	0.492
3 1234, LABROPOULOS J	7.381	B0.000	298.01	0.522
4 1287, SPILIOPOULOS A	7.397	B0.000	298.01	0.744
5 1220, KARAMAZAKIS E	7.514	B0.000	299.25	0.461
6 1221, STAVROPOULOS N	7.738	B0.000	291.73	0.572
7 1222, MAVROMATIS S	7.763	B0.000	289.15	0.589
8 1228, PERIVANIS S	8.141	B0.000	263.73	0.875
9 1203, BAKANOS D	8.187	B0.000	273.55	0.595
10 1201, MIXAILIDIS G	8.228	B0.000	286.85	0.808
11 1269, SEMERTZIDIS E	8.234	B0.000	281.03	0.579
12 1270, KALANTZIS K	11.917	B0.000	187.30	0.545

LEGEND: B = breakout
R = redlight
click heading to sort standings

1 AUTO INDEX	2 MOTO FREE PASS	3 AUTO DRAGSTER	4 MOTO DRAGSTER
A AT 1(2700)	A AT 2(2800)	A BT 1(2300)	A BT 2(2400)
A INDEX 07	A INDEX 08	A INDEX 09	A INDEX 10
A INDEX 11	A INDEX 12	A INDEX 13	A OPEN(2900)
JUNIOR(1900)	M PRO STREET 1(1300)	M PRO STREET 2(1100)	M PRO Z(1700)
M REAL STREET(1600)	M STREET 2(1400)	M SUPER PRO(1000)	M SUPER STREET(1000)
	M TRUE STREET 9(2000)		

M SUPER PRO(1000) -- Qualify Round

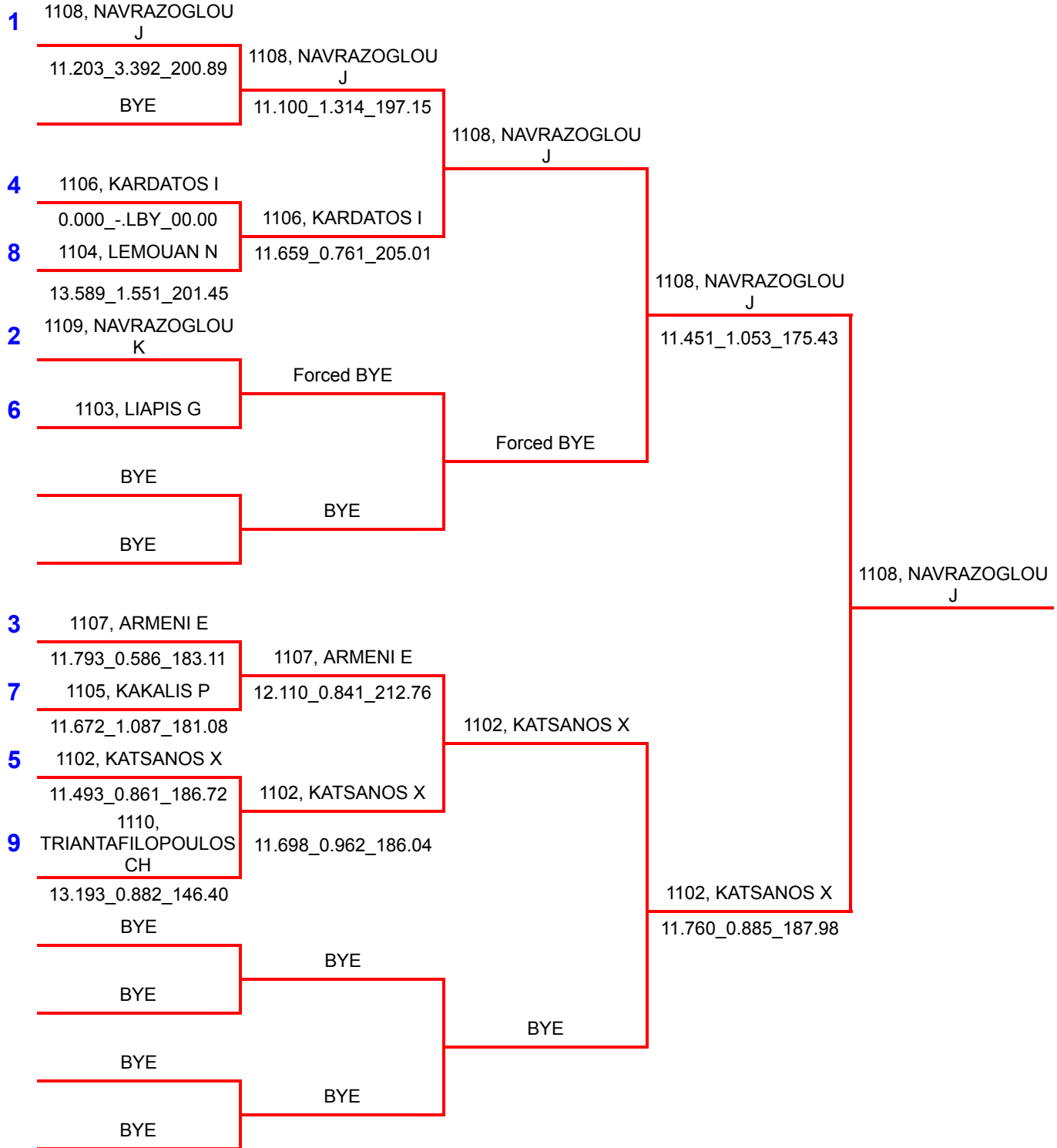
Driver	ET	Closest	Speed	RT
1 1012, GOTSIOS D	6.967	B0.000	305.86	0.928
2 1001, SIDIROPOULOS P	7.419	B0.000	276.92	0.983
3 1019, PAPAILIOU X	7.541	B0.000	294.59	0.591
4 1004, LEVANTIS M	8.222	B0.000	264.70	0.822
5 1023, KOVAIOS I	8.223	B0.000	270.88	2.023
6 1025, KOUTROUFINIS P	9.115	B0.000	255.50	1.054
7 1020, KIROU G	24.041	B0.000	168.53	1.719

LEGEND: B = breakout
R = redlight
click heading to sort standings

A AT 1(2700)	A AT 2(2800)	A BT 1(2300)	A INDEX 08
A INDEX 09	A INDEX 11	M PRO STREET 1(13)	M PRO STREET 2(11)
M PRO Z(1700)	M REAL STREET(160)	M STREET 2(1400)	M SUPER PRO(1000)
	M SUPER STREET(1	M TRUE STREET 9(2	

Print

A INDEX 11 -- Ladder Eliminations



A AT 1(2700)	A AT 2(2800)	A BT 1(2300)	A INDEX 08
A INDEX 09	A INDEX 11	M PRO STREET 1(13)	M PRO STREET 2(11)
M PRO Z(1700)	M REAL STREET(160)	M STREET 2(1400)	M SUPER PRO(1000)
	M SUPER STREET(1	M TRUE STREET 9(2	

Print

A INDEX 09 -- Ladder Eliminations

1 0902, SKAMNELOS S

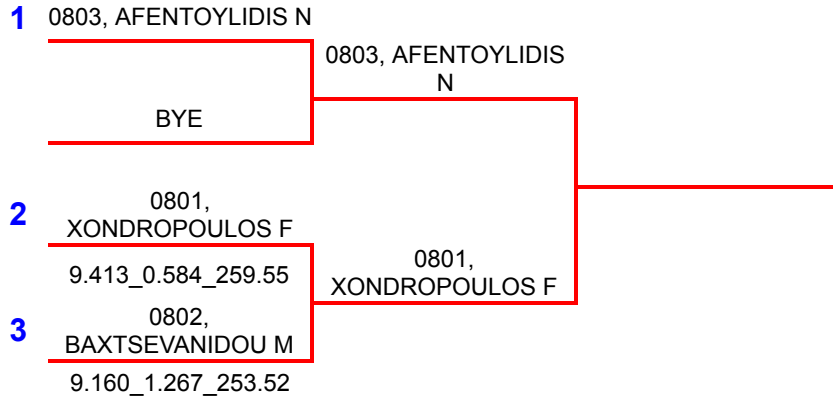
2 0901, ZAXOS D

Copyright 2009-2017 RaceAmerica, Inc.

A AT 1(2700)	A AT 2(2800)	A BT 1(2300)	A INDEX 08
A INDEX 09	A INDEX 11	M PRO STREET 1(13)	M PRO STREET 2(11)
M PRO Z(1700)	M REAL STREET(160)	M STREET 2(1400)	M SUPER PRO(1000)
	M SUPER STREET(1	M TRUE STREET 9(2	

Print

A INDEX 08 -- Ladder Eliminations

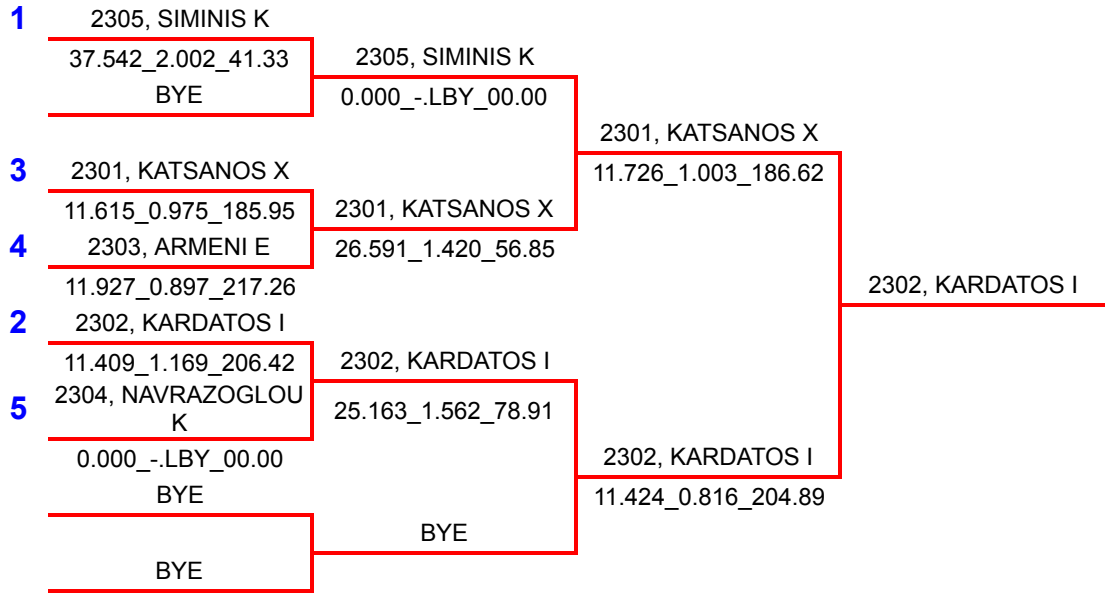


Copyright 2009-2017 RaceAmerica, Inc.

A AT 1(2700)	A AT 2(2800)	A BT 1(2300)	A INDEX 08
A INDEX 09	A INDEX 11	M PRO STREET 1(13)	M PRO STREET 2(11)
M PRO Z(1700)	M REAL STREET(160)	M STREET 2(1400)	M SUPER PRO(1000)
	M SUPER STREET(1	M TRUE STREET 9(2	

Print

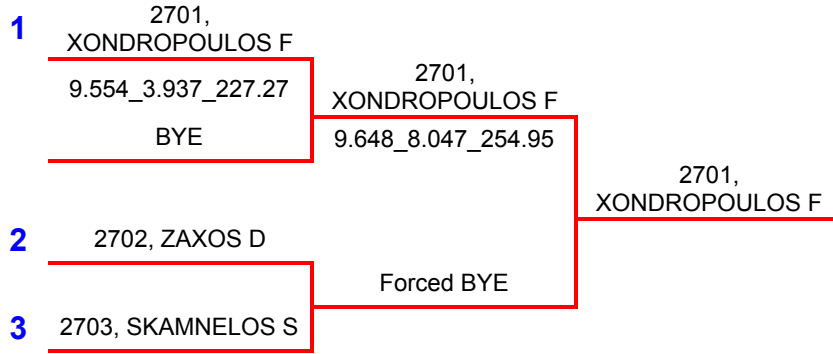
A BT 1(2300) -- Ladder Eliminations



A AT 1(2700)	A AT 2(2800)	A BT 1(2300)	A INDEX 08
A INDEX 09	A INDEX 11	M PRO STREET 1(13)	M PRO STREET 2(11)
M PRO Z(1700)	M REAL STREET(160)	M STREET 2(1400)	M SUPER PRO(1000)
	M SUPER STREET(1	M TRUE STREET 9(2	

Print

A AT 1(2700) -- Ladder Eliminations



A AT 1(2700)	A AT 2(2800)	A BT 1(2300)	A INDEX 08
A INDEX 09	A INDEX 11	M PRO STREET 1(13)	M PRO STREET 2(11)
M PRO Z(1700)	M REAL STREET(160)	M STREET 2(1400)	M SUPER PRO(1000)
	M SUPER STREET(1	M TRUE STREET 9(2	

Print

A AT 2(2800) -- Ladder Eliminations

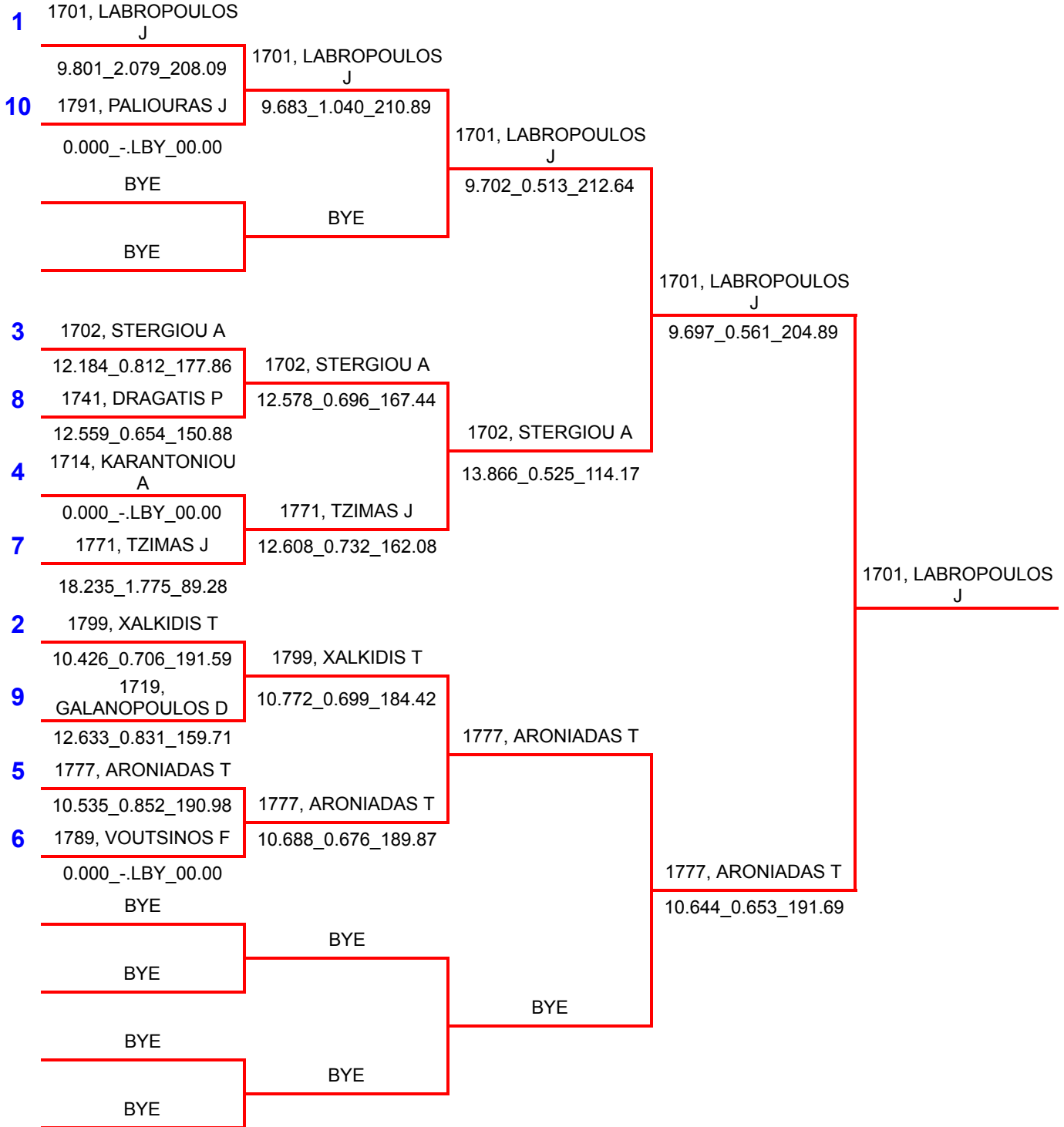
- 1 2803, AFENTOYLIDIS N
0.000_-.LBY_00.00 2801, KATSIGIANNIS G
- 2 2801, KATSIGIANNIS G
10.256_1.927_227.84

Copyright 2009-2017 RaceAmerica, Inc.

A AT 1(2700)	A AT 2(2800)	A BT 1(2300)	A INDEX 08
A INDEX 09	A INDEX 11	M PRO STREET 1(13)	M PRO STREET 2(11)
M PRO Z(1700)	M REAL STREET(160)	M STREET 2(1400)	M SUPER PRO(1000)
	M SUPER STREET(1	M TRUE STREET 9(2	

Print

M PRO Z(1700) -- Ladder Eliminations



A AT 1(2700)	A AT 2(2800)	A BT 1(2300)	A INDEX 08
A INDEX 09	A INDEX 11	M PRO STREET 1(13)	M PRO STREET 2(11)
M PRO Z(1700)	M REAL STREET(160)	M STREET 2(1400)	M SUPER PRO(1000)
	M SUPER STREET(1	M TRUE STREET 9(2	

Print

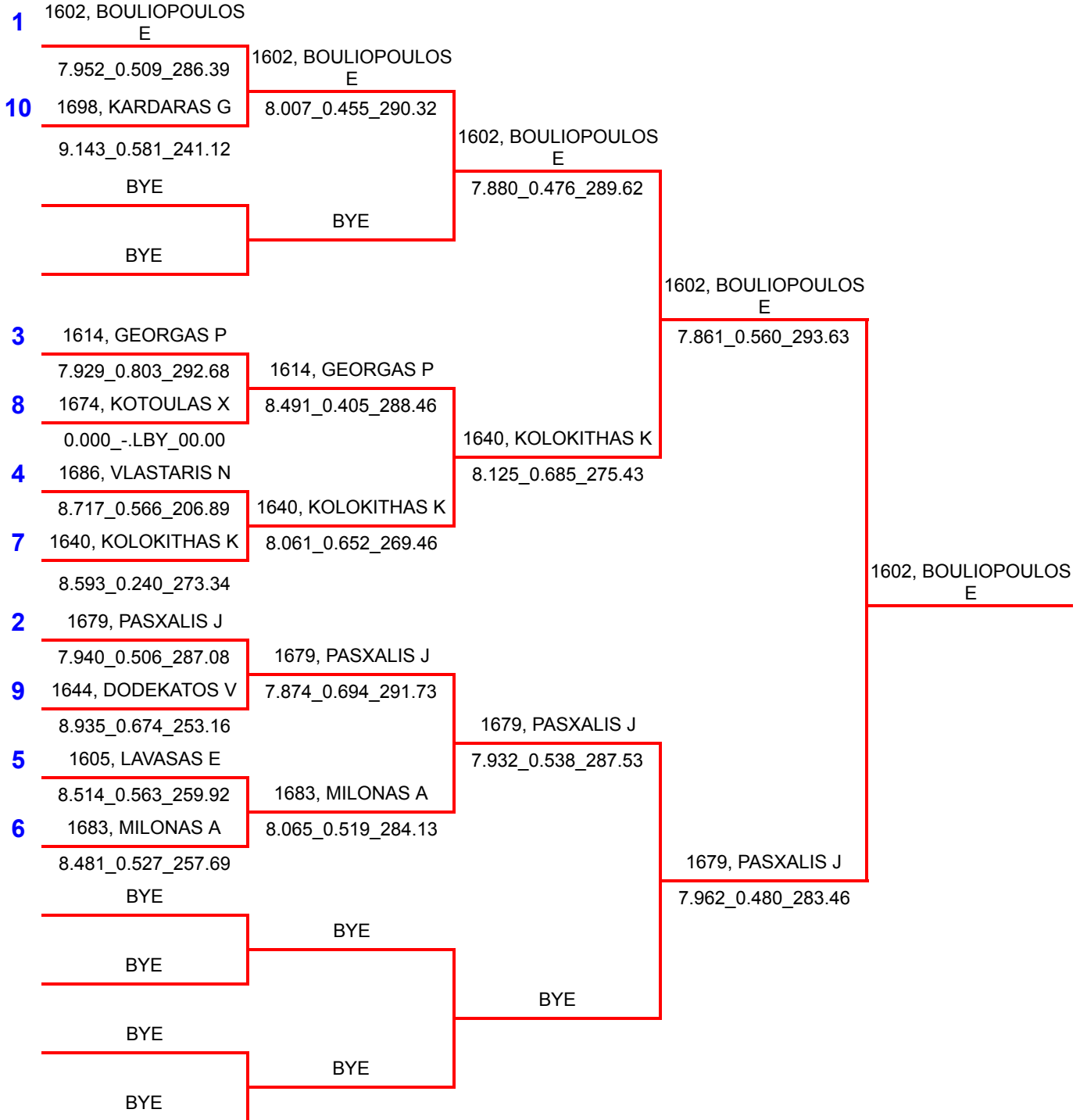
M TRUE STREET 9(2000) -- Ladder Eliminations

1	2070, SOULTOUKIS A 10.129_1.239_144.40 BYE	2070, SOULTOUKIS A 9.095_0.606_258.62	
8	2019, TZEIVARIDIS I 9.251_0.682_249.82	2064, KIRIAZIS A 9.145_0.475_243.73	2064, KIRIAZIS A 15.719_0.630_69.53
9	2064, KIRIAZIS A 9.181_0.552_243.90		
4	2056, KONTAXIS G 9.264_0.608_193.96	2056, KONTAXIS G 9.127_0.495_249.13	2072, KAZDAGLIS S 9.078_0.480_250.00
13	2088, PAPAGIANNIS M 10.101_0.533_208.09		
5	2072, KAZDAGLIS S 9.361_0.535_205.94	2072, KAZDAGLIS S 9.031_0.517_241.93	2072, KAZDAGLIS S 9.431_0.512_185.47
12	2012, PAPADIMITRIOU J 9.528_0.602_245.39		
2	2001, MANTHOU D 9.336_0.615_220.45	2001, MANTHOU D 9.262_0.633_255.50	2072, KAZDAGLIS S
15	2033, XAGORARI I 10.937_1.116_219.24		
7	2023, LEONTIOU E 9.314_0.502_251.04	2099, KOTROZOS G 9.355_0.529_241.44	2099, KOTROZOS G 9.748_0.452_227.41
10	2099, KOTROZOS G 9.308_0.504_243.07		
3	2095, LAIOS X 9.305_0.803_246.57	2095, LAIOS X 9.105_0.549_248.96	2095, LAIOS X 9.194_0.395_247.08
14	2045, KAPOGLIS E 10.339_0.874_227.41		
6	2013, PANTOPOULOU E 9.817_0.504_216.47	2022, MANDRAGOUREAS D 9.505_0.488_240.00	2095, LAIOS X 9.100_0.539_246.40
11	2022, MANDRAGOUREAS D 9.465_0.491_227.70		

A AT 1(2700)	A AT 2(2800)	A BT 1(2300)	A INDEX 08
A INDEX 09	A INDEX 11	M PRO STREET 1(13)	M PRO STREET 2(11)
M PRO Z(1700)	M REAL STREET(1600)	M STREET 2(1400)	M SUPER PRO(1000)
	M SUPER STREET(1)	M TRUE STREET 9(2)	

Print

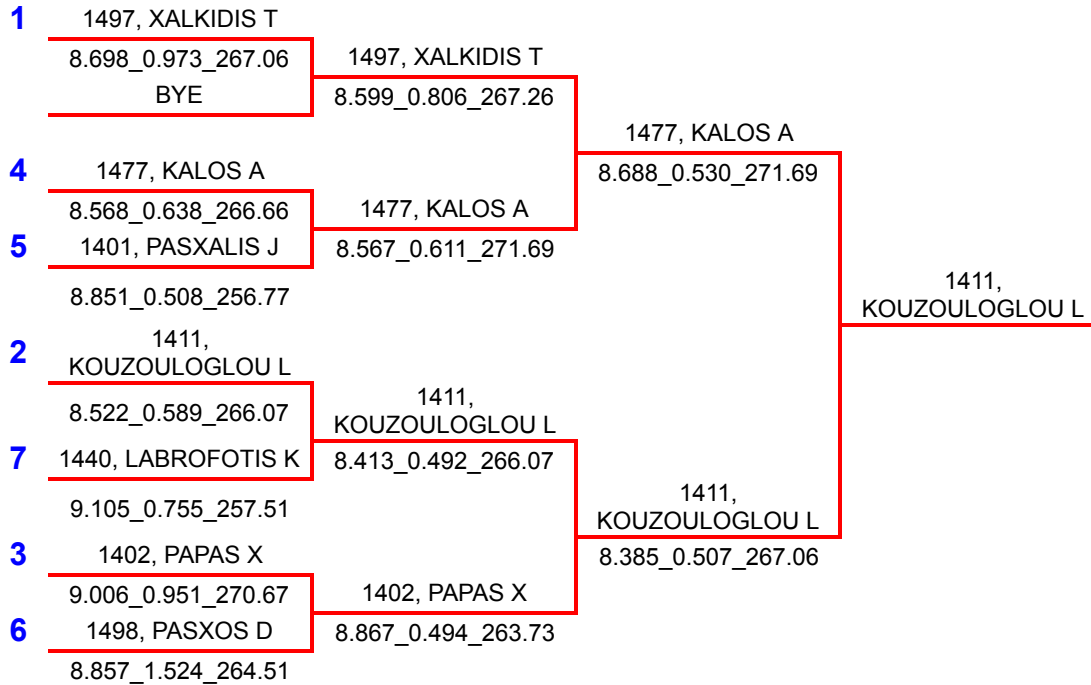
M REAL STREET(1600) -- Ladder Eliminations



A AT 1(2700)	A AT 2(2800)	A BT 1(2300)	A INDEX 08
A INDEX 09	A INDEX 11	M PRO STREET 1(13)	M PRO STREET 2(11)
M PRO Z(1700)	M REAL STREET(160)	M STREET 2(1400)	M SUPER PRO(1000)
	M SUPER STREET(1	M TRUE STREET 9(2	

Print

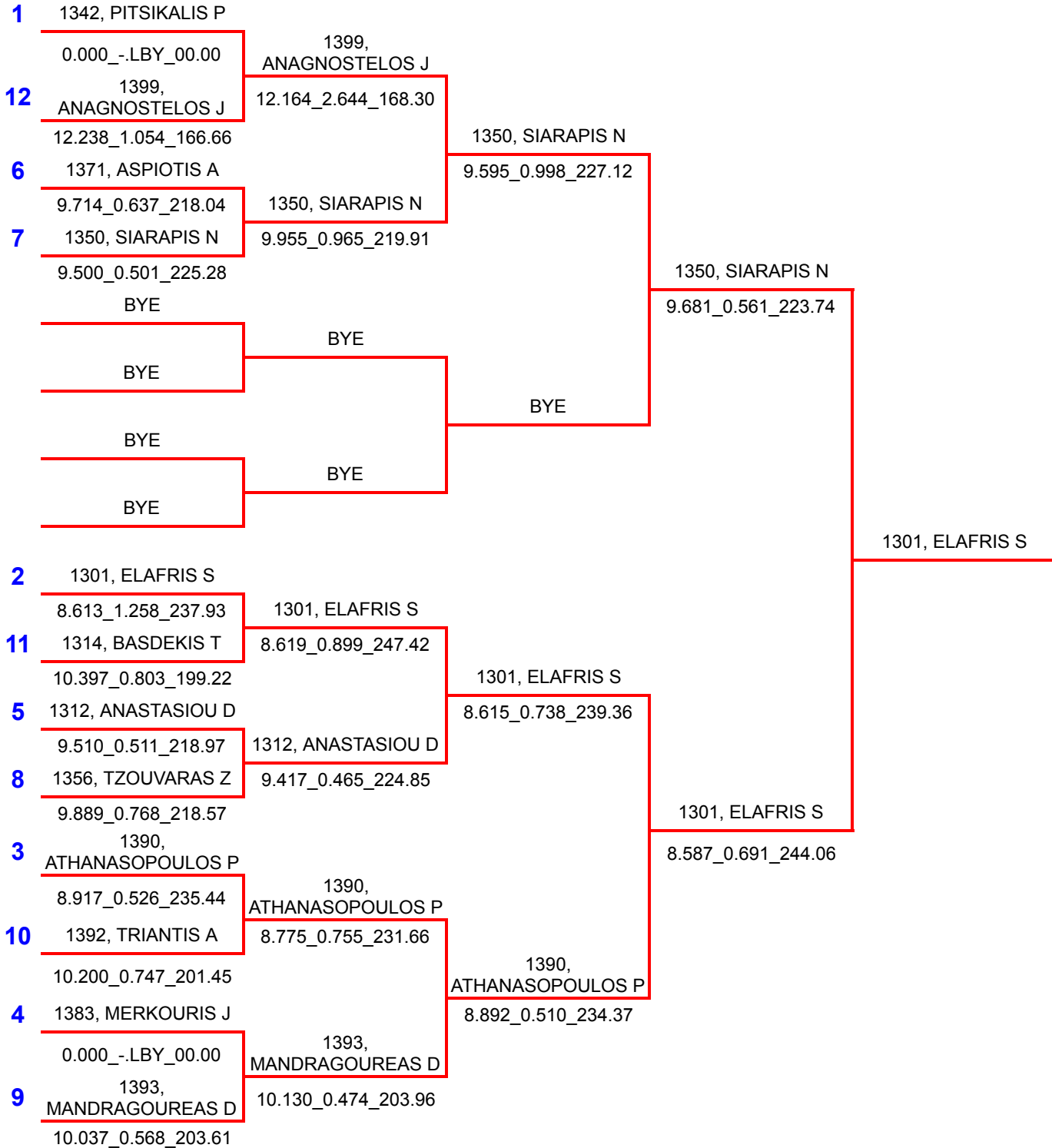
M STREET 2(1400) -- Ladder Eliminations



A AT 1(2700)	A AT 2(2800)	A BT 1(2300)	A INDEX 08
A INDEX 09	A INDEX 11	M PRO STREET 1(1300)	M PRO STREET 2(1100)
M PRO Z(1700)	M REAL STREET(1600)	M STREET 2(1400)	M SUPER PRO(1000)
	M SUPER STREET(1000)	M TRUE STREET 9(2000)	

Print

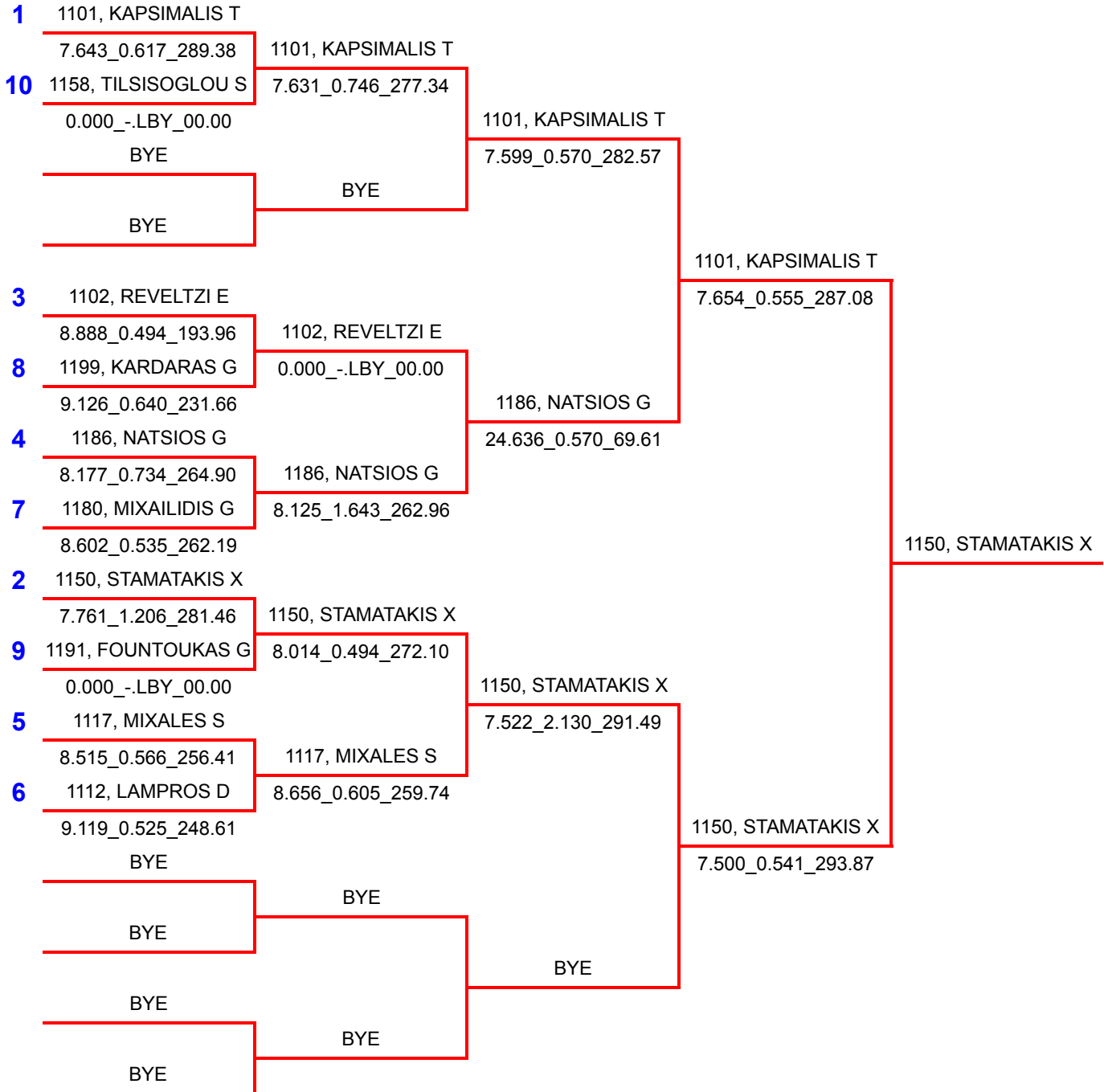
M PRO STREET 1(1300) -- Ladder Eliminations



A AT 1(2700)	A AT 2(2800)	A BT 1(2300)	A INDEX 08
A INDEX 09	A INDEX 11	M PRO STREET 1(13)	M PRO STREET 2(11)
M PRO Z(1700)	M REAL STREET(160)	M STREET 2(1400)	M SUPER PRO(1000)
	M SUPER STREET(1	M TRUE STREET 9(2	

Print

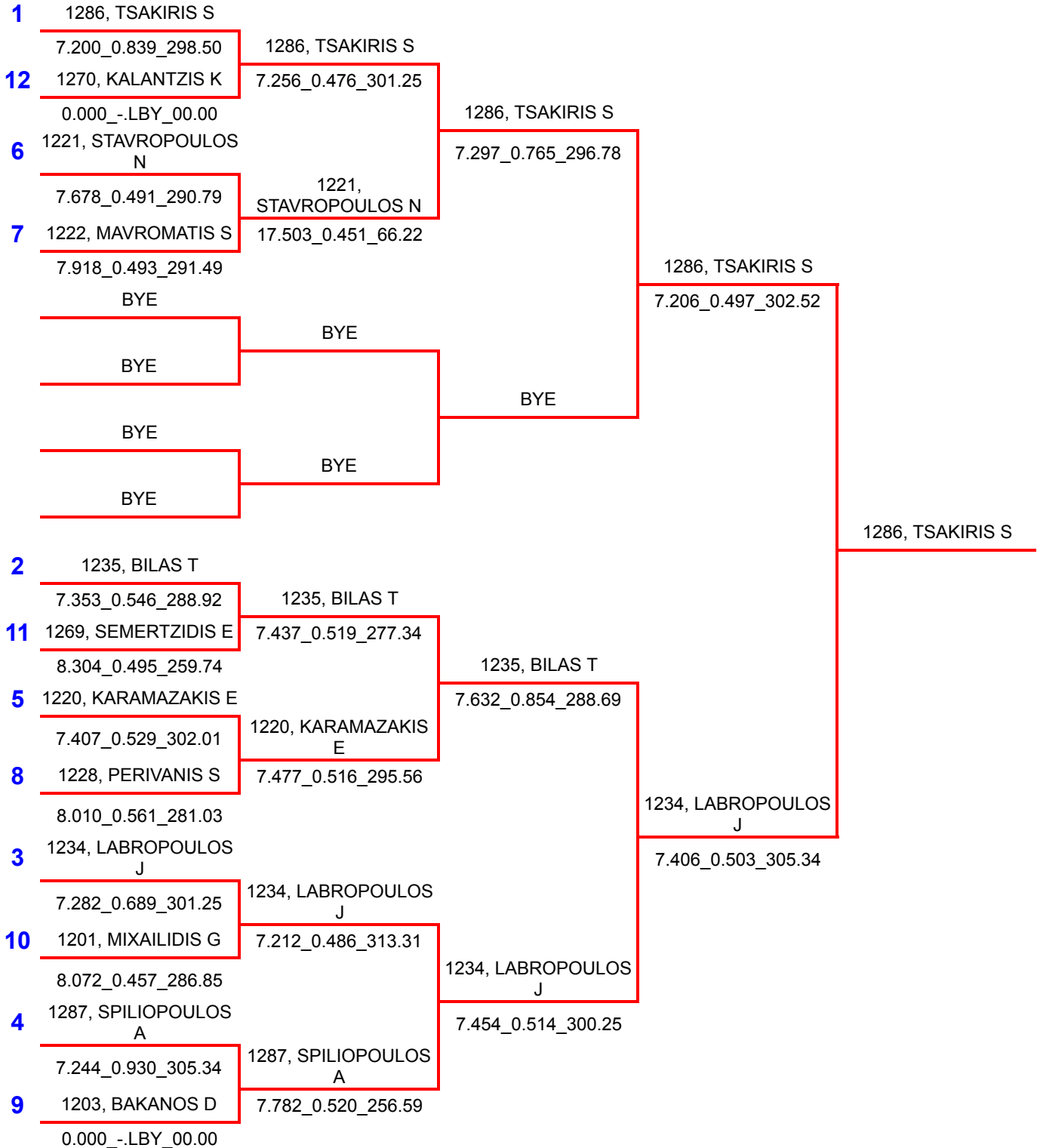
M PRO STREET 2(1100) -- Ladder Eliminations



A AT 1(2700)	A AT 2(2800)	A BT 1(2300)	A INDEX 08
A INDEX 09	A INDEX 11	M PRO STREET 1(13)	M PRO STREET 2(11)
M PRO Z(1700)	M REAL STREET(160)	M STREET 2(1400)	M SUPER PRO(1000)
	M SUPER STREET(1	M TRUE STREET 9(2	

Print

M SUPER STREET(1200) -- Ladder Eliminations



A AT 1(2700)	A AT 2(2800)	A BT 1(2300)	A INDEX 08
A INDEX 09	A INDEX 11	M PRO STREET 1(13)	M PRO STREET 2(11)
M PRO Z(1700)	M REAL STREET(160)	M STREET 2(1400)	M SUPER PRO(1000)
	M SUPER STREET(1	M TRUE STREET 9(2	

Print

M SUPER PRO(1000) -- Ladder Eliminations

