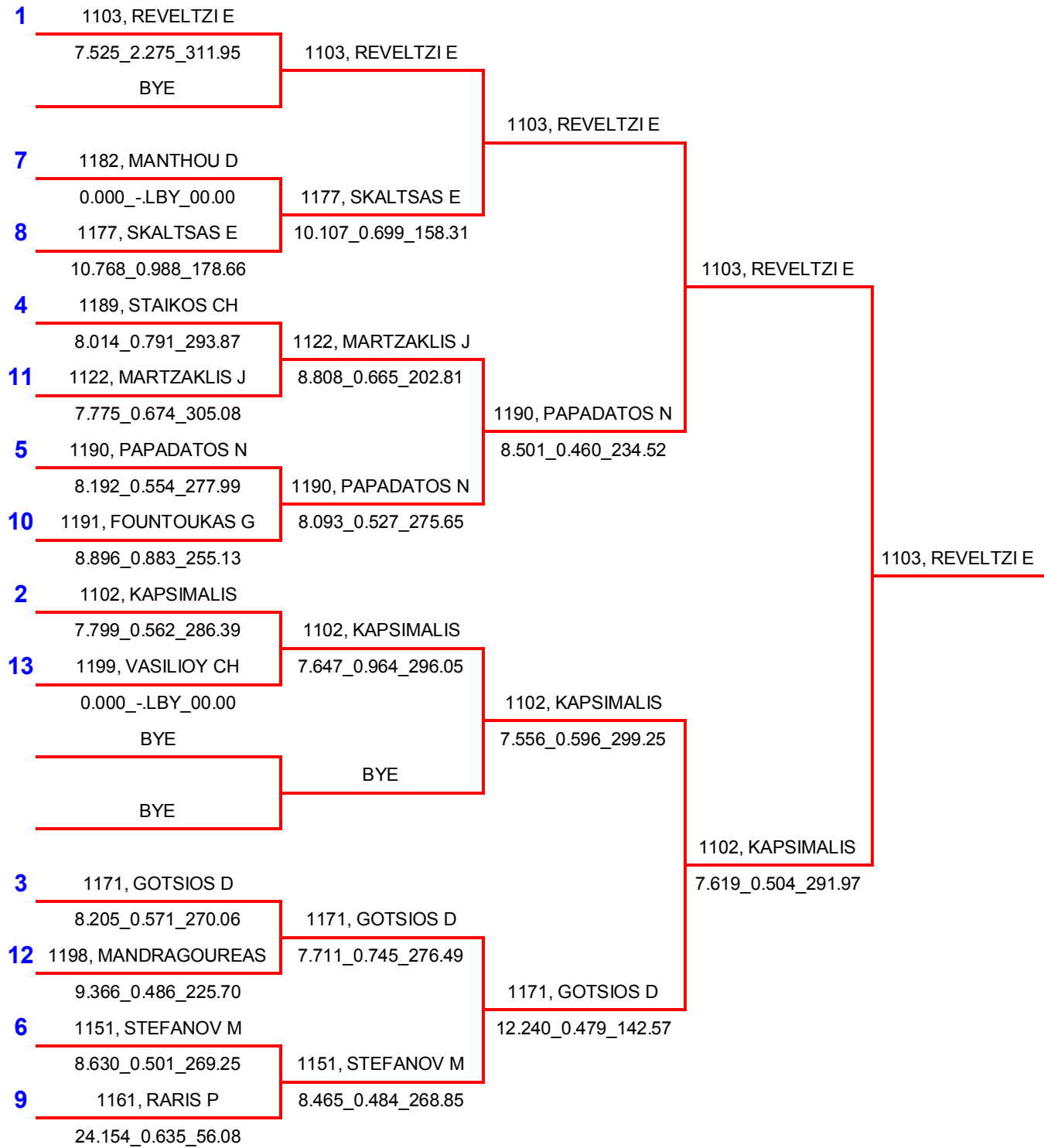
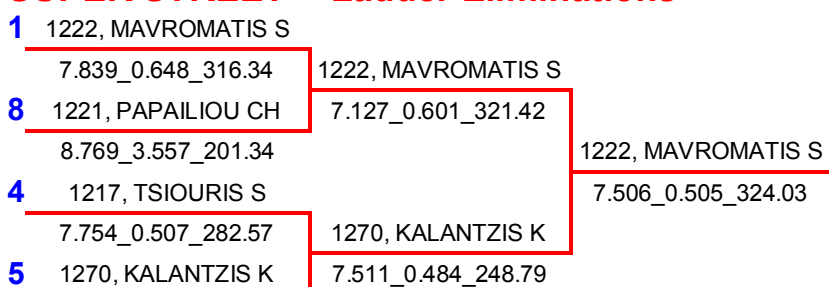
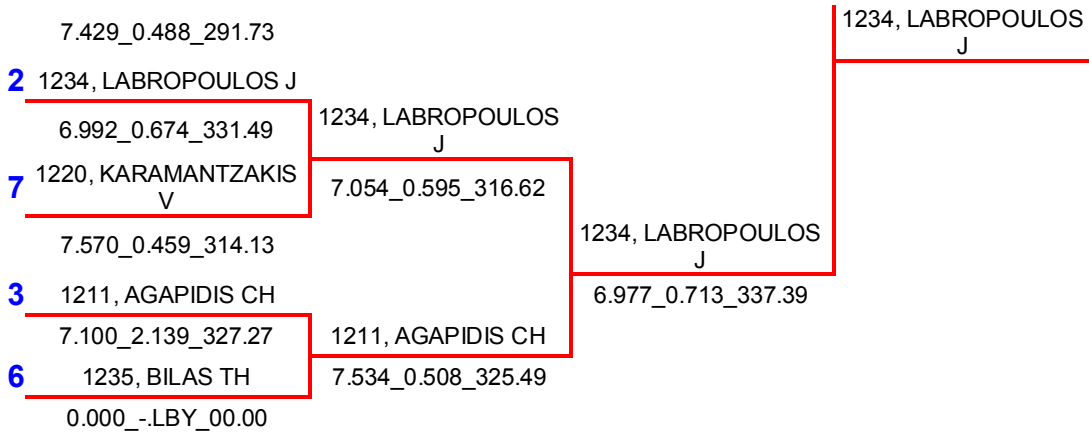


PRO STREET 2 -- Ladder Eliminations

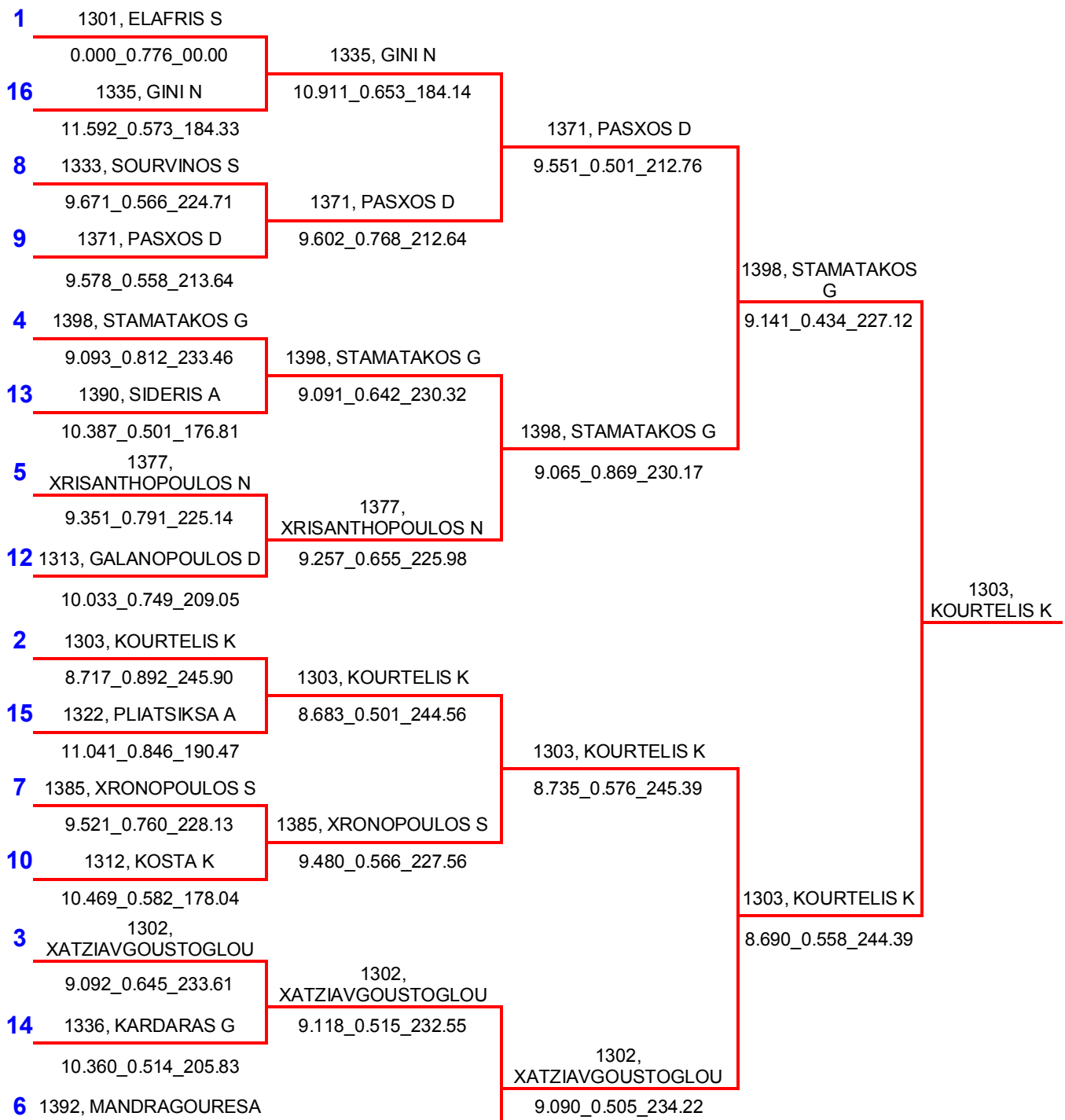


SUPER STREET -- Ladder Eliminations





PRO STREET 1 -- Ladder Eliminations



	D	
	9.524_0.520_225.28	1392, MANDRAGOURESA D
11	1353, BOIS N	9.326_0.469_223.60
	9.816_0.476_218.04	

STREET 2 -- Ladder Eliminations

1	1441, SOULTOUKIS A		
	8.872_0.547_252.80	1441, SOULTOUKIS A	
	BYE	8.544_0.555_261.81	
			1441, SOULTOUKIS A
4	1466, KALOS A		8.546_0.526_263.92
	9.336_0.656_253.69	1466, KALOS A	
5	1473, MIXAILIDIS A	9.489_0.627_249.65	
	0.000_-.LBY_00.00		1441, SOULTOUKIS A
2	1401, PAPAS CH		
	8.695_0.760_270.47	1401, PAPAS CH	
7	1415, STANISLAV I	8.716_0.846_265.48	
	9.945_0.847_233.16		1471, AKTIPIIS N
3	1471, AKTIPIIS N		8.700_0.449_260.68
	8.795_0.732_266.46	1471, AKTIPIIS N	
6	1472, XRISOFAKIS M	8.690_0.523_268.05	
	9.539_0.678_240.48		

REAL STREET -- Ladder Eliminations

1	1602, BOULIOPOULOS V		
	9.455_0.464_160.71	1602, BOULIOPOULOS V	
	BYE	7.944_0.485_265.68	
			1602, BOULIOPOULOS V
4	1627, PAPANIKOLAOU CH		7.968_0.419_267.26
	8.793_0.671_252.10	1627, PAPANIKOLAOU CH	
5	1685, PAPADOPOULOS F	8.408_0.404_257.14	
	8.556_-.LBY_282.35		1601, PASXALIS J
2	1616, LABROPOULOS J		
	8.151_0.406_276.71	1616, LABROPOULOS J	
7	1661, RARIS P	9.559_0.490_155.77	
	8.674_0.574_272.93		1601, PASXALIS J
3	1601, PASXALIS J		7.867_0.459_293.87
	8.002_0.568_296.05	1601, PASXALIS J	
6	1647, AFRIKIAN G	8.217_0.637_219.91	
	8.097_0.481_272.31		

PRO Z -- Ladder Eliminations

1	1781, VAILAKIS D	
	10.362_0.587_195.01	1781, VAILAKIS D

4	1726, TZEIVARIDIS J 10.788_0.507_186.72	0.000_-LBY_00.00	1770, DEDEOGLOU K
2	1770, DEDEOGLOU K 10.917_3.174_178.57	1770, DEDEOGLOU K	
3	1769, GALANOPOULOS D 0.000_-LBY_00.00	10.811_2.984_182.46	

TRUE STREET 9 -- Ladder Eliminations

1	2014, KIRIATZIS A 9.298_0.585_242.91	2014, KIRIATZIS A	
12	2074, BORISLAV M 9.761_0.549_238.09	20.000_0.344_103.44	2071, TZIMAS J
6	2016, BOTSIS A 9.332_0.806_252.63	2071, TZIMAS J	9.590_1.815_245.06
7	2071, TZIMAS J 9.580_0.501_241.61	9.402_0.439_244.73	2071, TZIMAS J
	BYE		9.310_0.599_244.56
	BYE	BYE	
	BYE		BYE
	BYE	BYE	
			2071, TZIMAS J
2	2025, PATOUNIS CH 9.251_1.182_252.63	2025, PATOUNIS CH	
11	2017, STAVROTHANASIS A 0.000_-LBY_00.00	9.265_0.570_251.57	2025, PATOUNIS CH
5	2026, MIXAILIDIS A 9.347_0.575_254.23	2026, MIXAILIDIS A	9.383_0.651_249.30
8	2073, PLEMEN K 9.378_0.664_246.57	9.412_0.739_254.05	2020, TSOUTZIDIS A
3	2020, TSOUTZIDIS A 9.403_0.542_252.45	2020, TSOUTZIDIS A	9.370_0.581_247.59
10	2018, XRISAFAKIS E 9.749_0.724_240.48	9.303_0.491_250.00	2020, TSOUTZIDIS A
4	2019, VAILAKIS D 9.339_0.667_242.09	2019, VAILAKIS D	9.366_0.543_248.79
9	2092, TRIANTIS A 9.517_0.708_241.93	9.392_0.576_238.88	

ALL CARS -- Qualify Round

Driver

1 0701, DINEV K	7.090	B0.000	317.46	2.688
2 2901, DINEV K	7.164	B0.000	317.46	2.792
3 2701, AFENTOULIDIS N	7.871	B0.000	285.94	0.498
4 0802, AFENTOULIDIS N	8.348	B0.000	205.36	1.605
5 0801, DAGRES CH	8.763	B0.000	252.98	7.931
6 2801, DAGRES CH	8.986	B0.000	256.59	4.615
7 0901, VERGIS K	9.345	0.345	251.04	0.447
8 1107, GLAPATZIS N	11.072	0.669	176.90	1.325
9 1102, MAMAKIS M	11.116	0.116	181.91	0.570
10 1106, KARKASINAS F	11.144	0.739	206.06	0.852
11 1101, KARDATOS I	11.155	0.155	220.31	0.563
12 2301, KARDATOS I	11.197	B0.000	220.99	0.925
13 1103, PETALAS K	11.283	0.283	192.61	0.758
14 2302, MAMAKIS M	11.315	0.315	216.34	0.824
15 1105, STAIKIDIS E	11.565	2.694	203.16	1.111
16 2303, STAIKIDIS E	11.704	B0.000	192.10	1.119
17 2304, KOTSIS X	11.936	13.459	200.44	2.503
18 1201, KOTSIS X	12.500	1.500	203.50	1.732
19 1301, PAPADOPOULOS J	12.572	B0.000	184.61	3.899
20 0902, PANAGIOTOU P	13.493	B0.000	153.25	1.786
21 2401, PAPADOPOULOS J	13.946	B0.000	172.91	4.014
22 1104, MARTIS D	14.071	B0.000	156.11	2.586
23 2702, PANAGIOTOU P	19.230	B0.000	75.63	2.634

PRO STREET 2 -- Qualify Round

Driver

1 1103, REVELTZI E	7.396	B0.000	317.18	0.551
2 1102, KAPSIMALIS	7.625	B0.000	304.31	0.514
3 1171, GOTSIOS D	7.671	2.357	288.69	0.866
4 1189, STAIKOS CH	7.828	B0.000	299.75	0.540
5 1190, PAPADATOS N	8.032	B0.000	282.35	2.785
6 1151, STEFANOV M	8.215	B0.000	274.39	0.621
7 1182, MANTHOU D	8.298	B0.000	273.55	0.611
8 1177, SKALTSAS E	8.428	B0.000	283.24	0.865
9 1161, RARIS P	8.487	B0.000	276.49	1.292
10 1191, FOUNTOUKAS G	8.915	B0.000	247.25	0.674
11 1122, MARTZAKLIS J	9.270	B0.000	191.79	0.927
12 1198, MANDRAGOUREAS	9.332	0.602	228.86	0.801
13 1199, VASILIOY CH	9.609	B0.000	235.91	1.016

SUPER STREET -- Qualify Round

Driver

1 1222, MAVROMATIS S	6.974	B0.000	337.07	1.092
2 1234, LABROPOULOS J	7.006	B0.000	331.79	0.506
3 1211, AGAPIDIS CH	7.008	B0.000	328.46	0.480

4 1217, TSIOURIS S	7.204	B0.000	314.96	1.155
5 1270, KALANTZIS K	7.405	B0.000	293.39	0.466
6 1235, BILAS TH	7.418	B0.000	301.76	0.539
7 1220, KARAMANTZAKIS V	7.581	B0.000	316.90	0.462
8 1221, PAPAILIOU CH	7.610	B0.000	309.01	0.602

PRO STREET 1 -- Qualify Round

Driver

1 1301, ELAFRIS S	8.356	B0.000	251.04	0.570
2 1303, KOURTELIS K	8.668	B0.000	247.42	0.669
3 1302, XATZIAVGOUSTOGLOU	9.019	B0.000	236.22	0.543
4 1398, STAMATAKOS G	9.094	B0.000	235.44	0.483
5 1377, XRISANTHOPOULOS N	9.239	B0.000	227.41	0.757
6 1392, MANDRAGOURESA D	9.251	B0.000	227.84	0.743
7 1385, XRONOPOULOS S	9.386	B0.000	230.76	0.925
8 1333, SOURVINOS S	9.601	B0.000	224.57	0.601
9 1371, PASXOS D	9.606	0.736	215.18	0.464
10 1312, KOSTA K	9.622	B0.000	220.85	0.544
11 1353, BOIS N	9.997	B0.000	218.84	0.537
12 1313, GALANOPOULOS D	10.145	B0.000	210.15	1.764
13 1390, SIDERIS A	10.194	B0.000	206.06	1.455
14 1336, KARDARAS G	10.198	B0.000	206.89	0.540
15 1322, PLIATSIKSA A	10.685	B0.000	194.91	1.380
16 1335, GINI N	11.105	B0.000	182.83	0.803

STREET 2 -- Qualify Round

Driver

1 1441, SOULTOUKIS A	8.355	B0.000	277.56	0.569
2 1401, PAPAS CH	8.654	B0.000	268.85	1.474
3 1471, AKTIPIS N	8.834	B0.000	267.45	0.754
4 1466, KALOS A	9.407	B0.000	253.52	0.541
5 1473, MIXAILIDIS A	9.513	B0.000	253.16	0.813
6 1472, XRISOFAKIS M	9.516	0.596	248.61	0.612
7 1415, STANISLAV I	9.766	B0.000	234.52	0.544

REAL STREET -- Qualify Round

Driver

1 1602, BOULIOPOULOS V	7.626	B0.000	306.38	0.487
2 1616, LABROPOULOS J	7.740	B0.000	296.78	0.500
3 1601, PASXALIS J	7.861	B0.000	295.08	0.671
4 1627, PAPANIKOLAOU CH	8.077	B0.000	280.81	0.806
5 1685, PAPADOPOULOS F	8.246	B0.000	287.31	0.640
6 1647, AFRIKIAN G	8.268	B0.000	279.28	1.104
7 1661, RARIS P	8.696	B0.000	272.52	0.981

PRO Z -- Qualify Round

Driver

1 1781, VAILAKIS D	10.255	B0.000	211.26	0.917
2 1770, DEDEOGLOU K	11.067	B0.000	180.36	2.852
3 1769, GALANOPOULOS D	13.264	B0.000	157.48	0.551
4 1726, TZEIVARIDIS J	16.645	B0.000	87.63	7.241

TRUE STREET 9 -- Qualify Round

Driver

1 2014, KIRIATZIS A	9.048	0.048	252.27	0.591
2 2025, PATOUNIS CH	9.140	0.140	252.80	0.598
3 2020, TSOUTZIDIS A	9.367	0.367	253.16	3.098
4 2019, VAILAKIS D	9.380	0.380	241.44	1.261
5 2026, MIXAILIDIS A	9.384	0.384	254.23	0.690
6 2016, BOTSIS A	9.396	0.396	250.34	0.941
7 2071, TZIMAS J	9.423	0.423	245.06	1.388
8 2073, PLEMEN K	9.459	0.459	247.08	0.555
9 2092, TRIANTIS A	9.484	0.484	242.26	1.701
10 2018, XRISAFAKIS E	9.616	0.616	242.42	0.980
11 2017, STAVROTHANASIS A	9.651	0.651	235.75	0.539
12 2074, BORISLAV M	9.884	0.884	241.61	0.584